



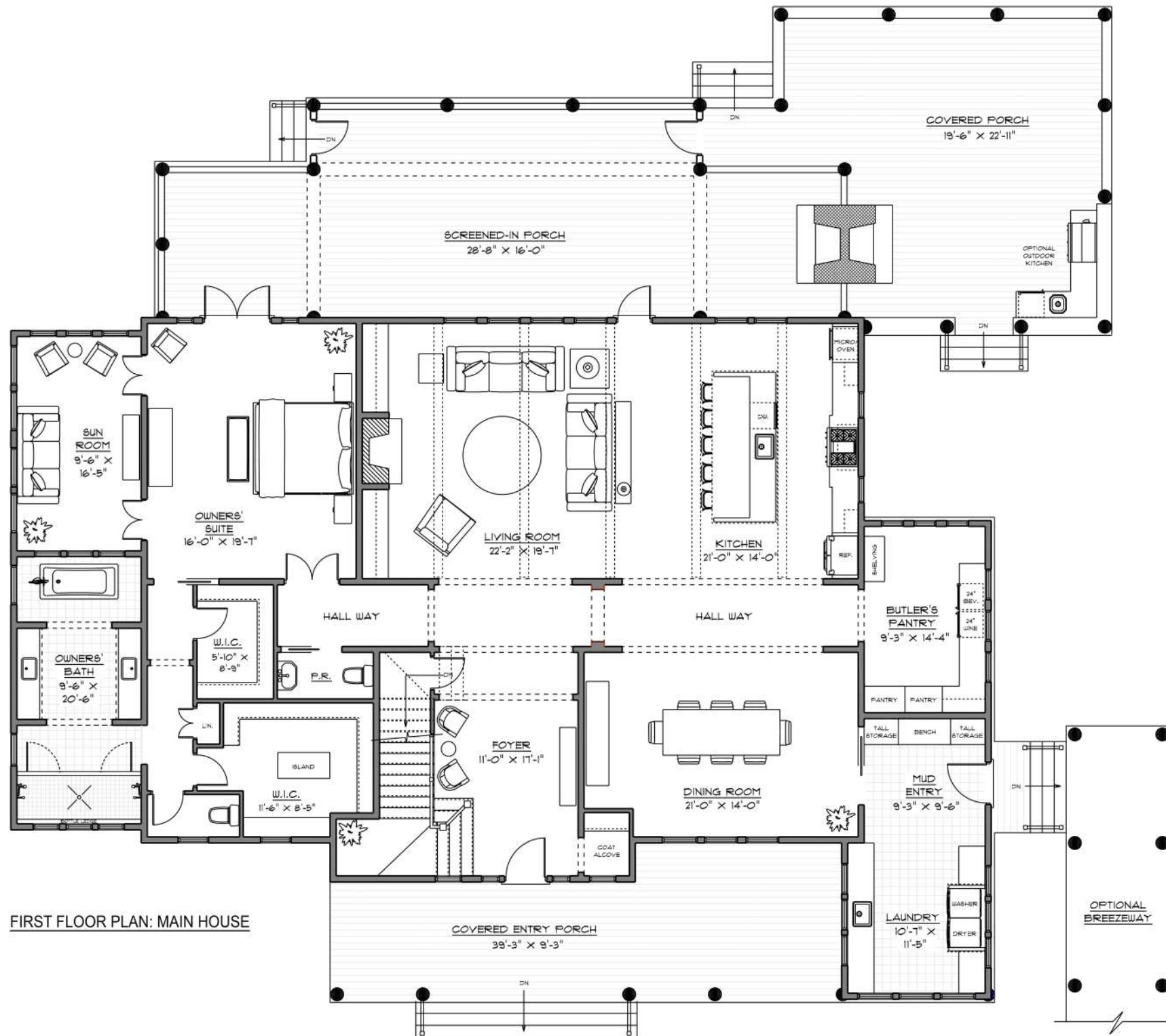
Mashpee, Massachusetts

Builder: New Seabury Homes, LLC

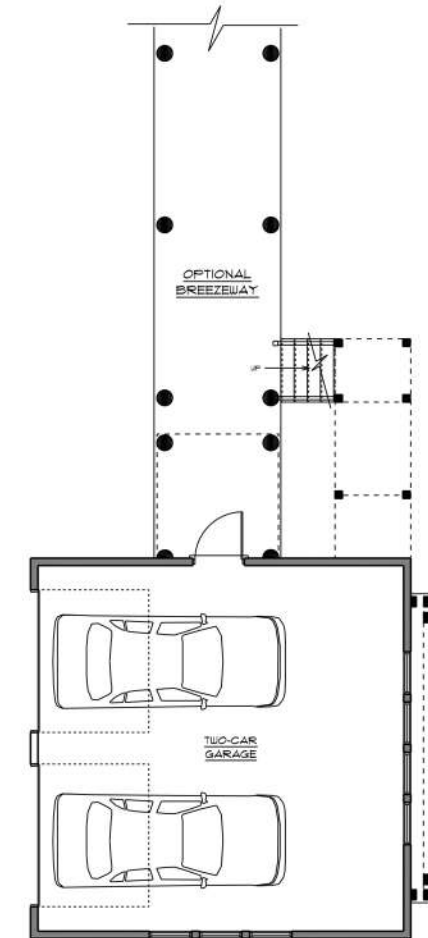
*This is a fascimile only and may not represent the actual construction. There may be items shown in these plans and images that are not included as standard items, but may be available as an option.

10 Rock Landing Road

January 2026



FIRST FLOOR PLAN: MAIN HOUSE



FIRST FLOOR PLAN: DETACHED TWO-CAR GARAGE

FIRST FLOOR SQUARE FOOTAGE: 3,052 G.S.F.
 SECOND FLOOR SQUARE FOOTAGE: 2,125 G.S.F.
 FIRST FLOOR GARAGE SQUARE FOOTAGE: 576 G.S.F.
 SECOND FLOOR GARAGE UNFINISHED BONUS ROOM SQUARE FOOTAGE: 576 G.S.F.
 TOTAL FINISHED SQ.FT.: 5,177
 TOTAL LIVABLE (INCLUDING GARAGE BONUS ROOM) SQ.FT.: 5,753
 SCREENED-IN PORCH SQUARE FOOTAGE: 773 S.F.
 SUN DECK: 1,313 SQ.FT.
 COVERED PORCHES: 1,104 SQ.FT.



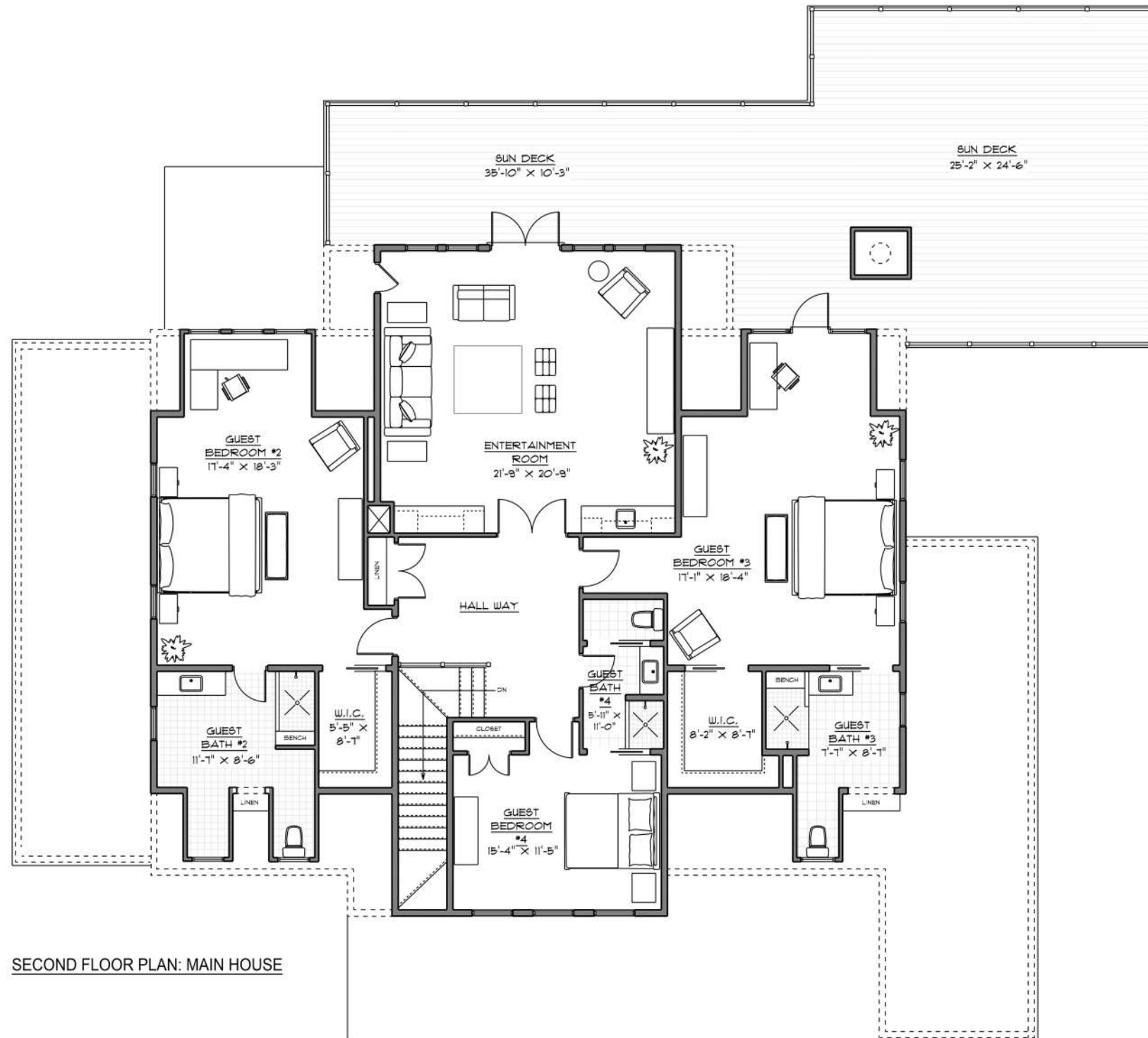
Mashpee, Massachusetts

Builder: New Seabury Homes, LLC

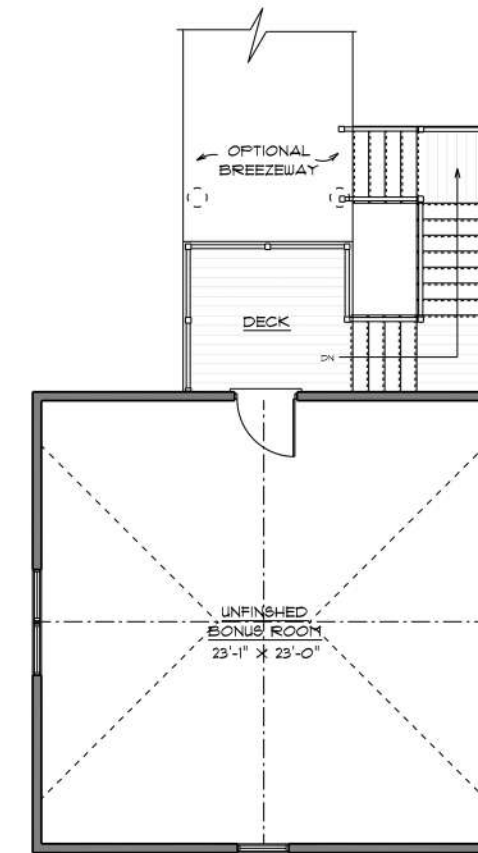
*This is a fascimile only and may not represent the actual construction. There may be items shown in these plans and images that are not included as standard items, but may be available as an option.

10 Rock Landing Road

January 2026



SECOND FLOOR PLAN: MAIN HOUSE



SECOND FLOOR PLAN: DETACHED TWO-CAR GARAGE

FIRST FLOOR SQUARE FOOTAGE: 3,052 G.S.F.
 SECOND FLOOR SQUARE FOOTAGE: 2,125 G.S.F.
 FIRST FLOOR GARAGE SQUARE FOOTAGE: 576 G.S.F.
 SECOND FLOOR GARAGE UNFINISHED BONUS ROOM SQUARE FOOTAGE: 576 G.S.F.
 TOTAL FINISHED SQ.FT.: 5,177
 TOTAL LIVABLE (INCLUDING GARAGE BONUS ROOM) SQ.FT.: 5,753
 SCREENED-IN PORCH SQUARE FOOTAGE: 773 S.F.
 SUN DECK: 1,313 SQ.FT.
 COVERED PORCHES: 1,104 SQ.FT.