



Mashpee, Massachusetts

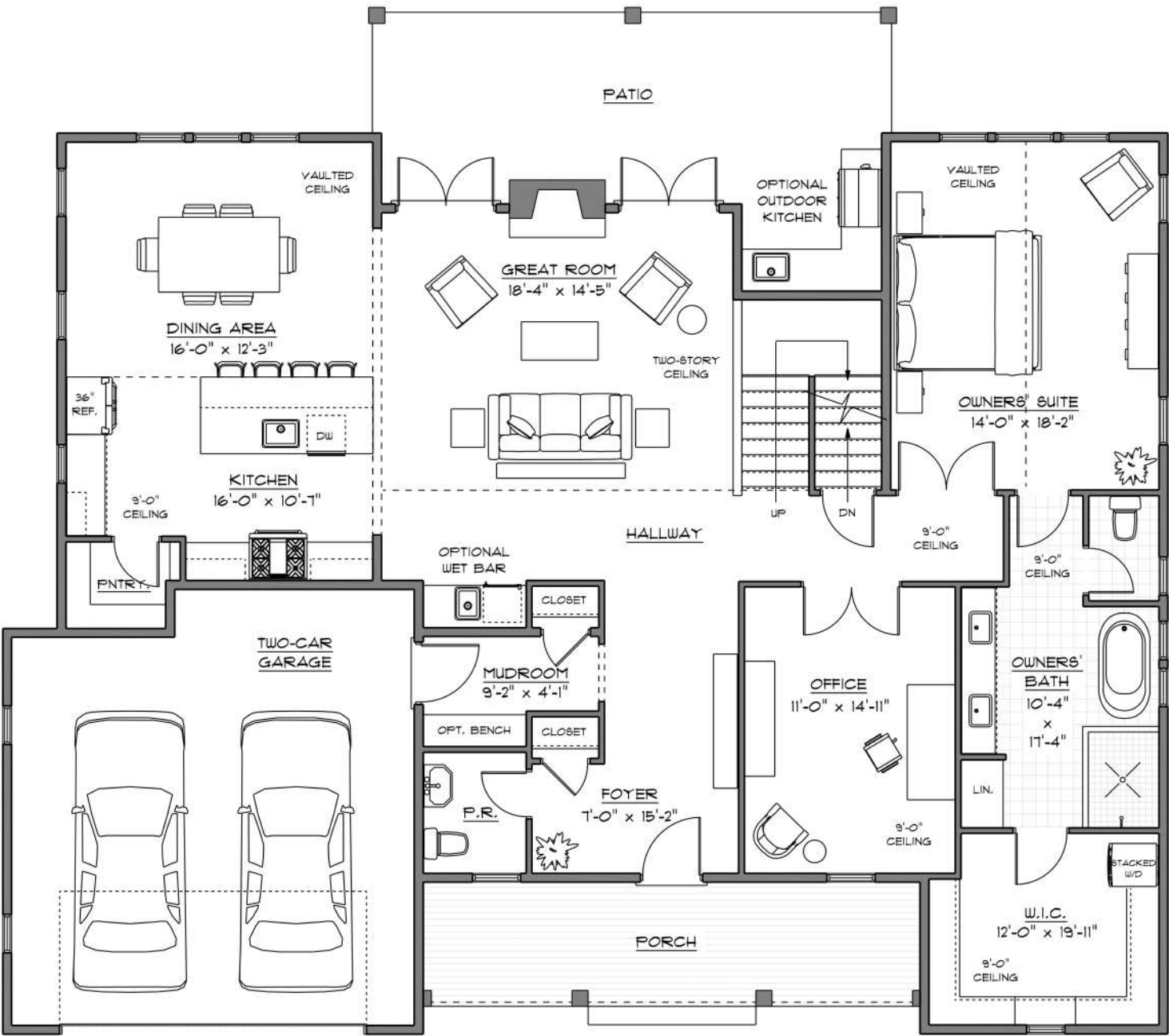
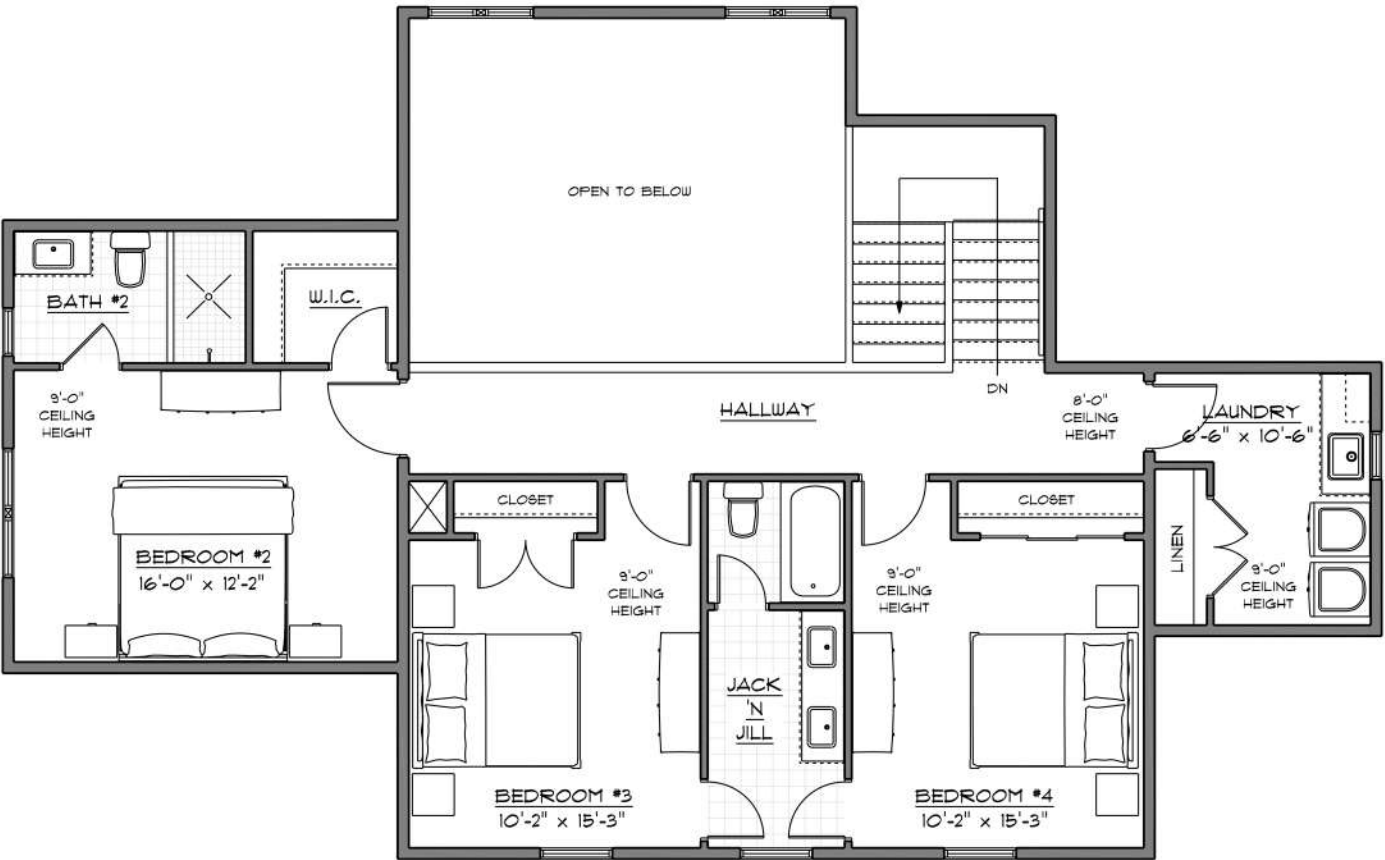
Builder: New Seabury Homes, LLC

*This is a fascimile only and may not represent the actual construction. There may be items shown in these plans and images that are not included as standard items, but may be available as an option.

November 2024

Fisher Model with Two-Car Garage

FIRST FLOOR SQUARE FOOTAGE: 1,959 G.S.F.
SECOND FLOOR SQUARE FOOTAGE: 1,073 G.S.F.
TOTAL SQ.FT: 3,032



SECOND FLOOR PLAN

FIRST FLOOR PLAN