



Mashpee, Massachusetts

Builder: New Seabury Homes, LLC

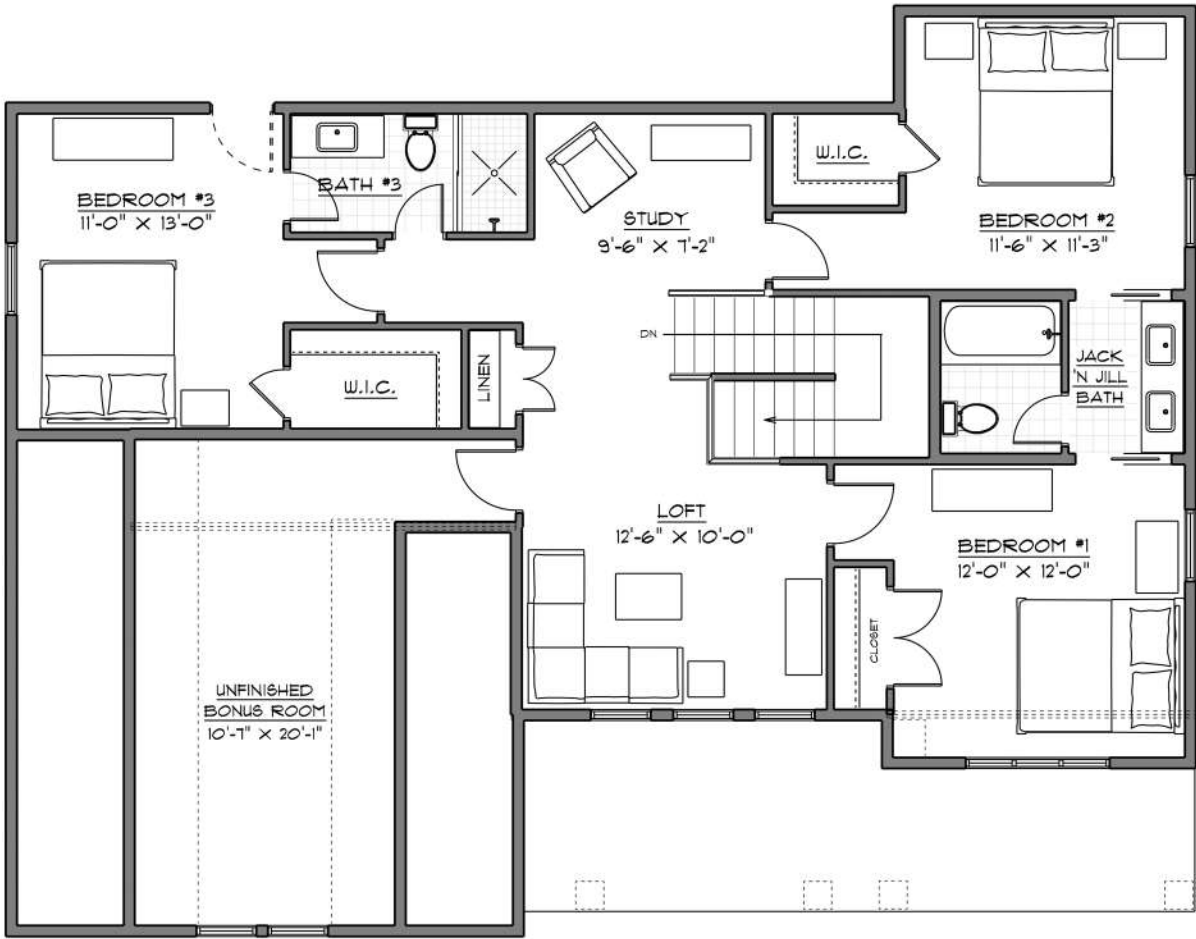
*This is a fascimile only and may not represent the actual construction. There may be items shown in these plans and images that are not included as standard items, but may be available as an option.

November 2024

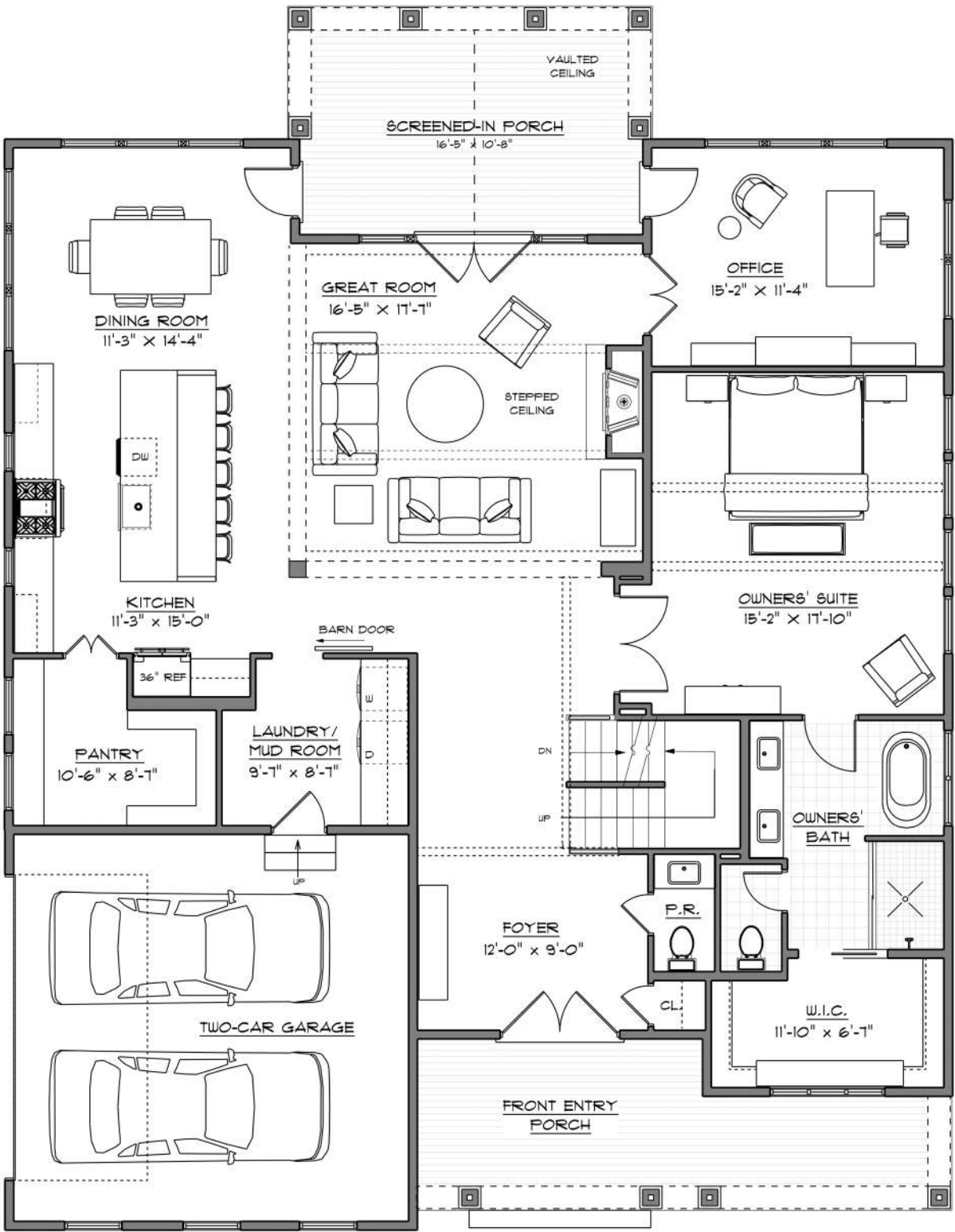
Ridgeway Model with Two-Car Garage

FIRST FLOOR SQUARE FOOTAGE: 2,035 G.S.F.
SECOND FLOOR SQUARE FOOTAGE: 1,100 G.S.F.
UNFINISHED BONUS ROOM SQUARE FOOTAGE: 258 G.S.F.

TOTAL FINISHED SQ.FT: 3,135
TOTAL LIVABLE (INCLUDING BONUS ROOM) SQ.FT.: 3,393



SECOND FLOOR PLAN



FIRST FLOOR PLAN